

QUN FENG

Qun Feng Manufacture Environment

环境产业制造商和先驱者

Environmental Industry Manufacture and Pioneer



Qun Feng Manufacture

Add: Ningjin Industrial Park, Dezhou city, China Web: www.peoks-eco.com
Tel: 0086 01060845986 Fax: 0534-5891588
E-mail: info@dzqunfeng.com



Judging the beauty of heaven and earth

-- analyzing the theory of everything.

Contents

04

QUNFENG PEAKS-ECO

- 04 PEAKS-ECO (Beautify life, purify the mind)
- 04 Company profile
- 06 Enterprise mission + spirit
- 08 Strategy + Research
- 09 Enterprise Honor

11

Products Show

Smart Waste Transfer Station Equipment

- 12 Intelligent Mobile Waste Compress Equipment
- 14 Horizontal Waste Compress Equipment
- 20 New Smart Underground Waste Compress Equipment

Smart Waste Transfer Station System

- 24 Vertical Waste Transfer Station System
- 28 Horizontal Waste Transfer Station System
- 32 Global Strategy and Market

32

Global Strategy and Market

- 32 Company Show
- 34 Project Show



Dezhou Qunfeng Machinery Manufacturing Group, located in the east of Ningjin economic development area of Dezhou Shandong, is a high-tech enterprise dedicated to manufacturing and operation of environmental sanitation equipment, weighing product and steel structure. In the environment industry, we mainly engage in research, manufacturing and sales of hydraulic products such as waste transfer equipment. The company is well placed for excellent environment and convenient traffic. It was first established in 1997 with 100 million yuan of registered capital. Currently it covers an area of 88,000 square kilometers with 500 million yuan of fixed assets and has more than 560 employees including 560 with senior title and 85 technical personnel.

In the environmental industry, Qunfeng is a manufacturing company specialized in making waste hydraulic compress equipment. The main products are vertical waste compress equipment, mobile horizontal waste compress equipment, buried waste compress equipment, horizontal waste compress equipment and waste classification system. Thanks to its professional team in specialties such as machinery engineering, automatic control, hydraulic structure and manufacturing. The company has strong technical and production capacity. All of our environmental products have passed ISO9001 certification in 2006, ISO14001-2004 certification and ISO18000 occupation health safety management system. Besides, we were graded 3 stars in Chinese post-sales service certification system.

Thanks to a successful business management, advanced product designs and strict quality control, Qunfeng Machinery Manufacturing has been striving for excellence for its products. In order to guarantee service quality and market influence, branch offices have been founded in Beijing, Shanghai, Dongbei, Guangxi and Sichuan. International post-sales service branches set in Middle East and Africa for the purpose of efficient services for clients.



Harmony between human and nature

Ecological development

Win-win

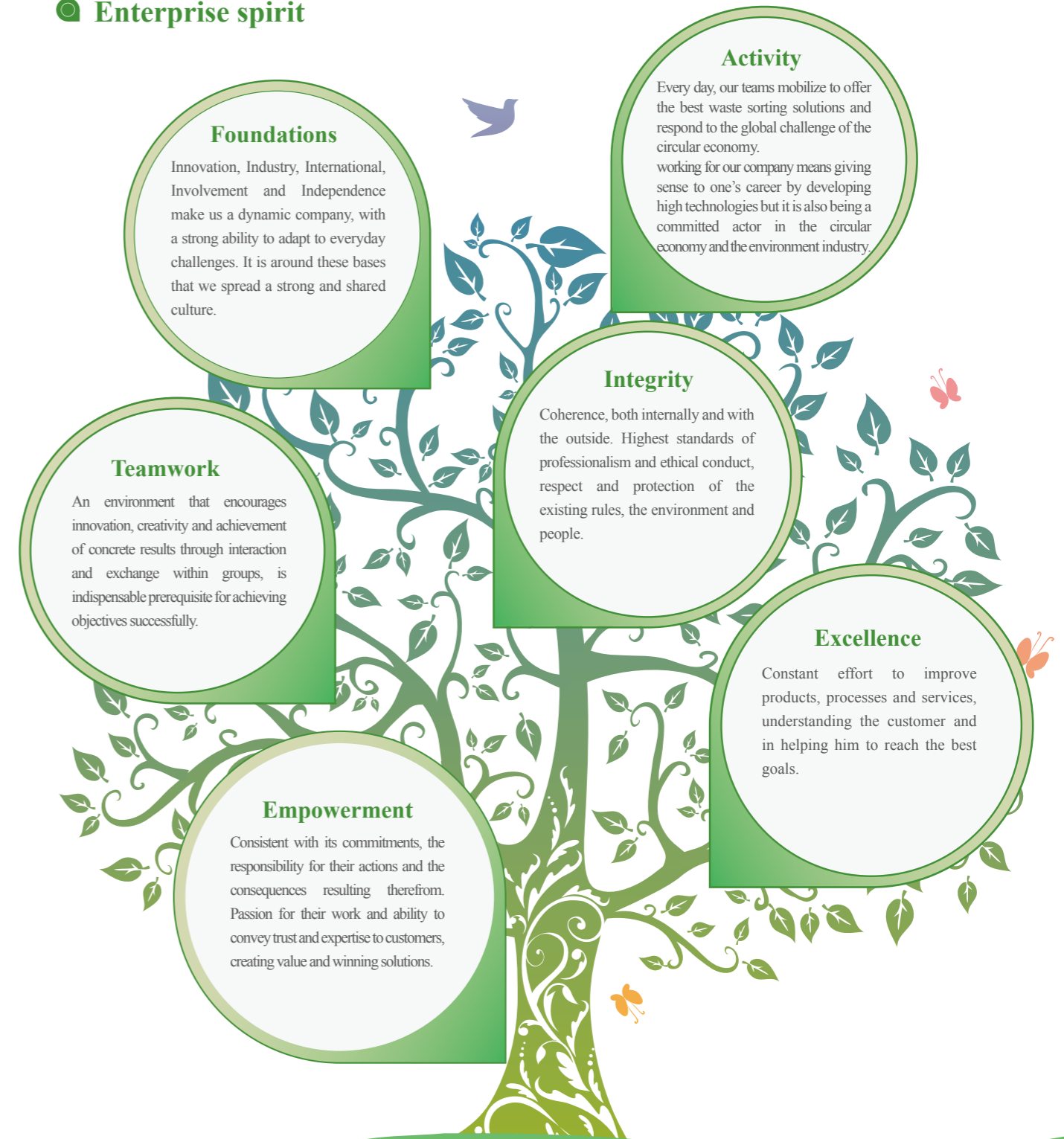
Our culture

At Qunfeng, “Harmonious, Ecological and Win-win” is the basic concept of our culture. We consider it to be not only our meaning and motivation as a environmental industry enterprise, but also our responsibility and obligation.

Inspired by Chairman Jinping Xi and Premier of the State Council Keqiang LI in their speeches, Qunfeng has been insisting on ecological and sustainable development in order to lead a ecological bussiness style and contribute to the world.

Reverence for nature and reverence for life.

Enterprise spirit



Company Strategy

Core strategy

Product manufacturing is our key. Making full use of Internet and financing as our boost, to promote the transformation of modern manufacturing industry in China and build a remarkable brand in chinese manufacturing industry.

Product strategy

Product quality guaranteed through constant self examination, self discipline and innovation.

Talent strategy

People oriented is the basic talent strategy of our company. We hope to make a wide platform for people with outstanding talents to fulfill themselves.

International strategy

Make our products recognised in the international market through constant honest cooperation.

Product research and development

Innovation is the spirit of an enterprise and it leads to progress, greatness and success.



企业荣誉





Product display

■ Intelligent waste transfer station system

Intelligent Mobile Waste Compress Equipment

Horizontal Detachable Waste Compress Equipment

Intelligent Underground Waste Container

Intelligent Solar Energy Underground Trash Bin

■ Large-scale waste transfer station and Accessories

Vertical Waste Compaction System

Horizontal Waste Compaction and Transfer System

Intelligent Mobile Waste Compress Equipment

Intelligent Mobile Waste Compress Equipment

This equipment has the compressor head integrated with the main body. It can be discharged during waste transfer and it's suitable for transfer station with capacity less than 80 tons, such as main waste station of a county or a town, also including residential unit, industrial zone, economic development zone, office building, commercial building, square or city avenue. It needs no specific station installation, which saves the economic costs and time for infrastructure construction and also reduces space occupation. The equipment is fully sealed up, allowing no waste leakage and secondary pollution during the process of collecting, compressing and transfer.

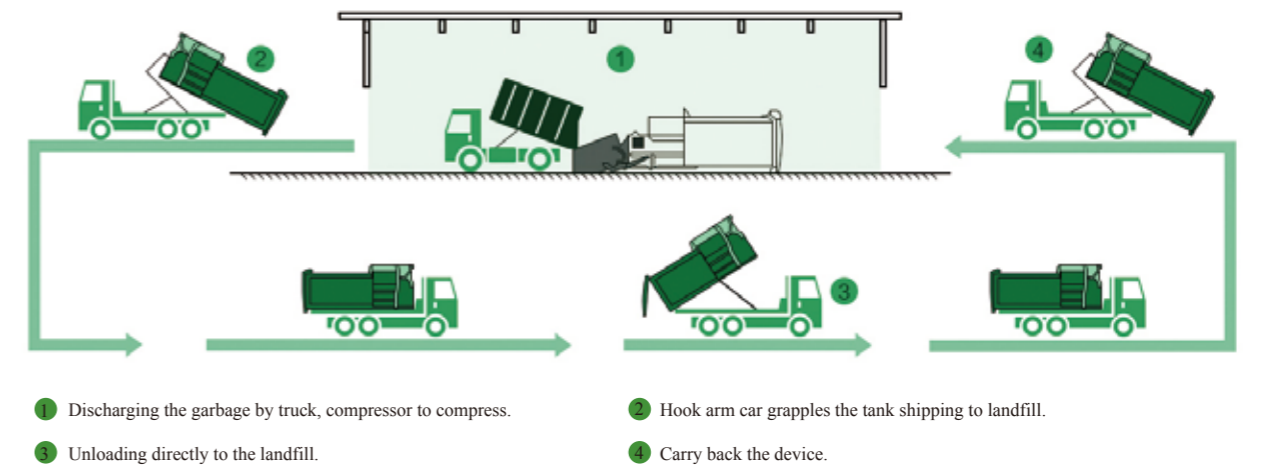
Although the machine dimension can be customized, we have 8, 12, 17 or 20 cubic metres as your standard models.

The compressing direction of this equipment is horizontal. Comparing to other similar products, the machine is better sealed up and well designed with a higher automation level and operation convenience.



LYSY Intelligent Mobile Waste Compress Equipment

Operation process of garbage station



Main Features

- The main body of the compressor is made of highly weather resistant steel plate by soldering. It's well produced for its fine appearance, light weight, high endurance and corrosion resistance.
- The compressor head is double curved with a pleasing waste breaking rate and compression efficiency.
- Cooler is optional for hydraulic system in order to permit a long time functioning in open air environment in hot seasons.
- Security device:
 - 1.Optional infrared camera inside the compression chamber and the main body of the equipment in order to monitor the conditions and waste quantity inside.
 - 2.Main power lock and emergency button for safety consideration.
- Waste liquid control system in the container, including double locks device and backdoor seal control to avoid secondary contamination during transportation.
- Hydraulic system in the chassis of the equipment in order to control the backdoor of the equipment. Orders can be sent in the operator room to open or close the backdoor and activate the discharge.
- Buffer device on the feeder for the purpose of avoid damage of feeding hopper or waste container caused by the collision of the ground.
- Small space occupied. Flexible transfer with no infrastructure needed.
- Several compressors can rotate for one single truck in order to guarantee a better working efficiency.

Project Site



Vacancy period



Filling process

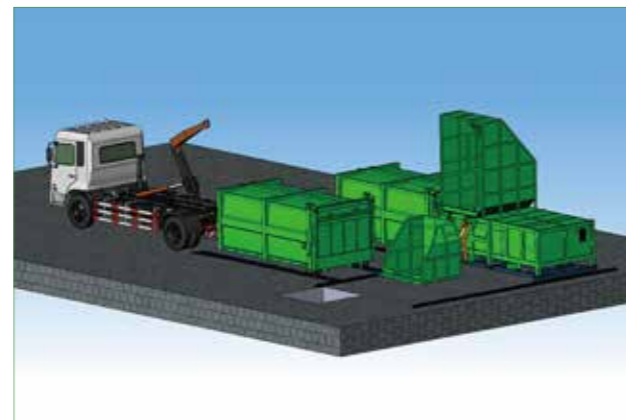
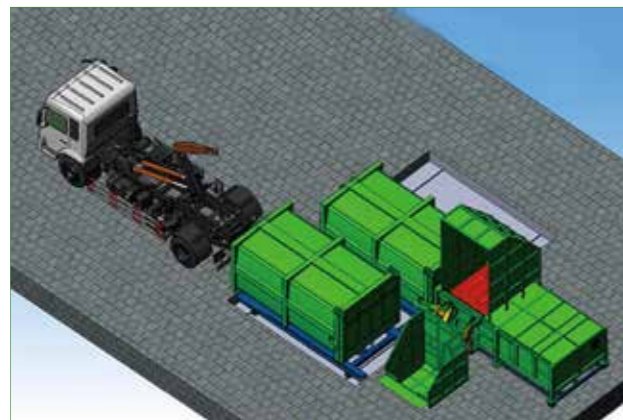


Transport process

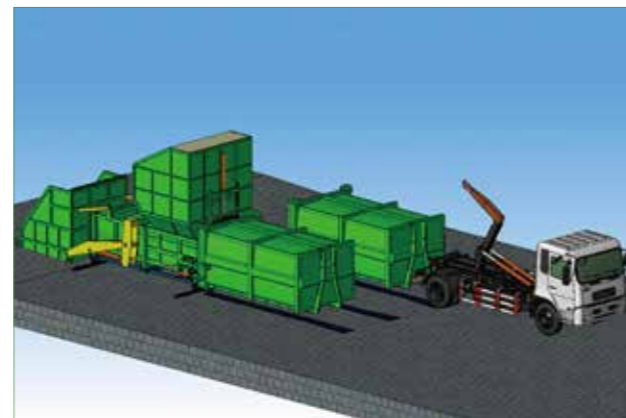
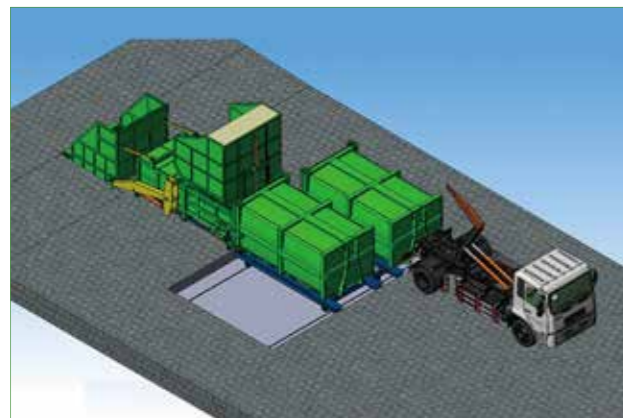
Horizontal Detachable Waste Compress Equipment

This product is one of our newest generation of self-developed domestic waste disposal equipment. It is composed of the main compress body, the detachable waste container and the transfer tracks. It is ideal for small scale waste collection such as hand collection with cart, tricycle and small dumper. Using horizontal compression technology, the waste volume can be highly reduced. After removing the liquid from the waste, it will be stored in a fully sealed container. This product is extremely approved for its convenience and application diversity.

LYS 系列产品 (LYS-A 型)

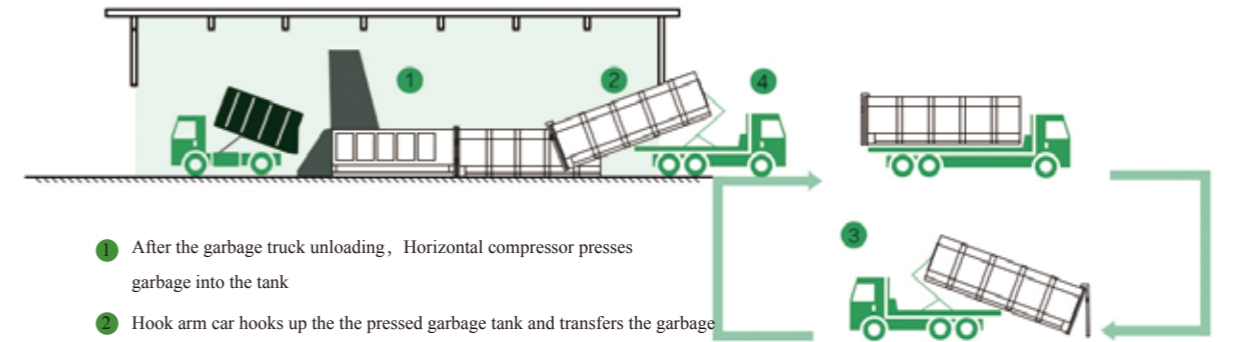


Side feeding



Rear feeding

Operation process of garbage station



- ① After the garbage truck unloading, Horizontal compressor presses garbage into the tank
- ② Hook arm car hooks up the the pressed garbage tank and transfers the garbage
- ③ Discharge to landfill
- ④ The Hook arm car returns the tank.

Main Features

- The main body of the compressor is made of highly weather resistant steel plate by soldering. It's well produced for its fine appearance, light weight, high endurance and corrosion resistance.
- The compressor head is double curved with a pleasing waste breaking rate and compression efficiency.
- Liquid guiding device on the back of the container for liquid discharging.
- Double guide wheels for the container door to ensure an absolute isolation between compressor and waste container.
- Twin pumps for the hydraulic system to optimize working efficiency and reduce energy consumption.
- Multiple security devices such as interlock on the control program, indicator lamp and warning signs.
- Optional deodorization and dust cleaning system to facilitate equipment cleaning.
- The main parts of the machine are processed firstly by shot peening, then anticorrosive paint and finally epoxy coat in order to extend service life in corrosive environment.

Project Site



Rear feeding



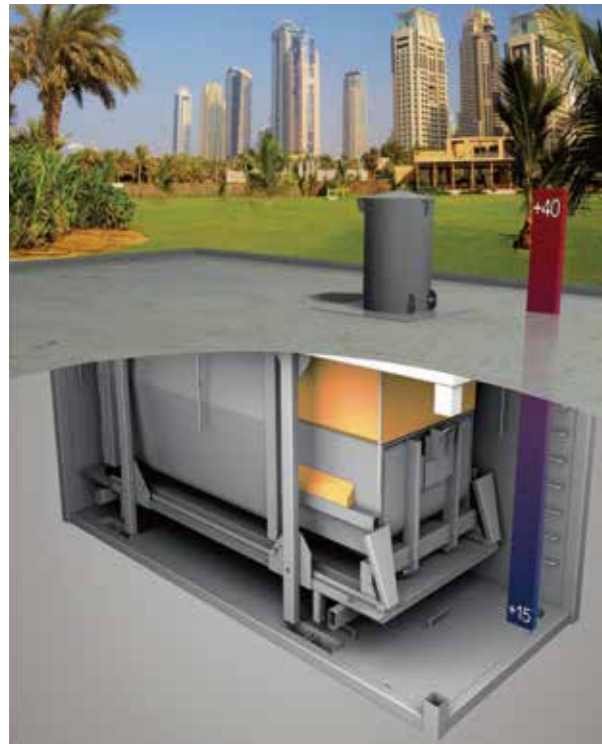
Side feeding



Exterior View

Intelligent Underground Waste Container

Underground Waste Container



This product is a perfect solution for ecological sanitation and waste disposal. The container size can be customized for different environments.

An invisible solution for public sanitation:
This is the most advanced space saving way for waste recycling, which is ideal for any geographical condition. It is composed of one single overground trash can and a whole set of underground devices, which includes the main framework structure and a waste compress machine. As an effective waste recycling system, it is suitable for storing all kinds of garbage. The underground elevator can be customized for different size. The standard models are 10m³, 17m³ and 20m³. As a perfect solution for public sanitation and waste collection, it is ideal for big commercial district and the downtown section of cities.

Main Features

- An hygienic solution for waste collection
Due to its underground container design, the system is completely free of unpleasant odour to the public environment
- A wide application range
Suitable for all kinds of urban environments from the biggest public area to small urban road.

Display varieties of underground waste devices



Intelligent Solar Energy Underground Trash Bin

This product carries a solar battery that can offer an advertisement display and USB porting for charging cell phone. The garbage container is buried underground to prevent light garbage such as plastic bags, paper or dust from flying around on windy days; Buried trash bin can also protect themselves from damage or stealing. On rainy days, water drops won't mix with the garbage and flow to the street causing secondary pollution. Besides, urban scavengers are not able to collect from underground containers and won't cause secondary pollution. The container is perfectly sealed up and won't spread odor to the outside and can stop mosquito breeding. The input of the trash bin is helical and has the advantage of flexible operation.



Main features of the product



Anticorrosion
Anticorrosive coating paint and stainless steel plate.



Antifreeze
Heat preservation layer for winter.



Waterproof
Carefully sealed up to prevent rain drops in the container in rainy summer.



Environment friendly
Solar battery provides advertisement display.

Project Site



Vertical Waste Compaction System

The system has adopted the most advanced vertical compression technology. The theory of the process, in simple words, is discharging waste from above to a vertical container below taking advantage of the gravity. It is as simple as we dump the garbage in the trash can every day. Our technology is to make full use of the limited space and simplify the process of waste transfer.

The waste container is considered as the core of the whole system. Every equipment of the transfer station is working around the container directly or indirectly. After the transfer truck places the container in the discharging position, the discharging hopper will be put above the container so that the waste can be discharged directly to it permitting no waste dropping out of the container. When the container is fairly full, the compactor will move to above the container and start to compress. As long as the container is completely full, it will be mounted on a transfer truck through a special guiding device to be transported for final disposal. The whole process is fairly simple and operation-maintenance friendly. It can working properly even when the power is off. Besides, central control panel, weighing device, deodorization and dust-cleaning devices are considered in the system.



Composition of the system



Main Features

- ① **Space saving** Transfer truck and garbage truck can be working in the same site without rampway.
- ② **Convenient discharging** Direct vertical discharging to the container with higher efficiency.
- ③ **No trash dropping out** Vertical compression from above to below inside the container allowing no waste dropping out of the box.
- ④ **Fully sealed container** The device is fully sealed allowing no waste liquid leakage from the container.
- ⑤ **Large transfer volume** Heavy detachable transfer truck is recommendable. More than 16 tons per truck.
- ⑥ **Low power consumption** Taking advantage of the gravity, the waste will be discharged directly to the container and compressed by the compactor, which only needs 30kw for maximum power.



Project Site



Structure appearance of project

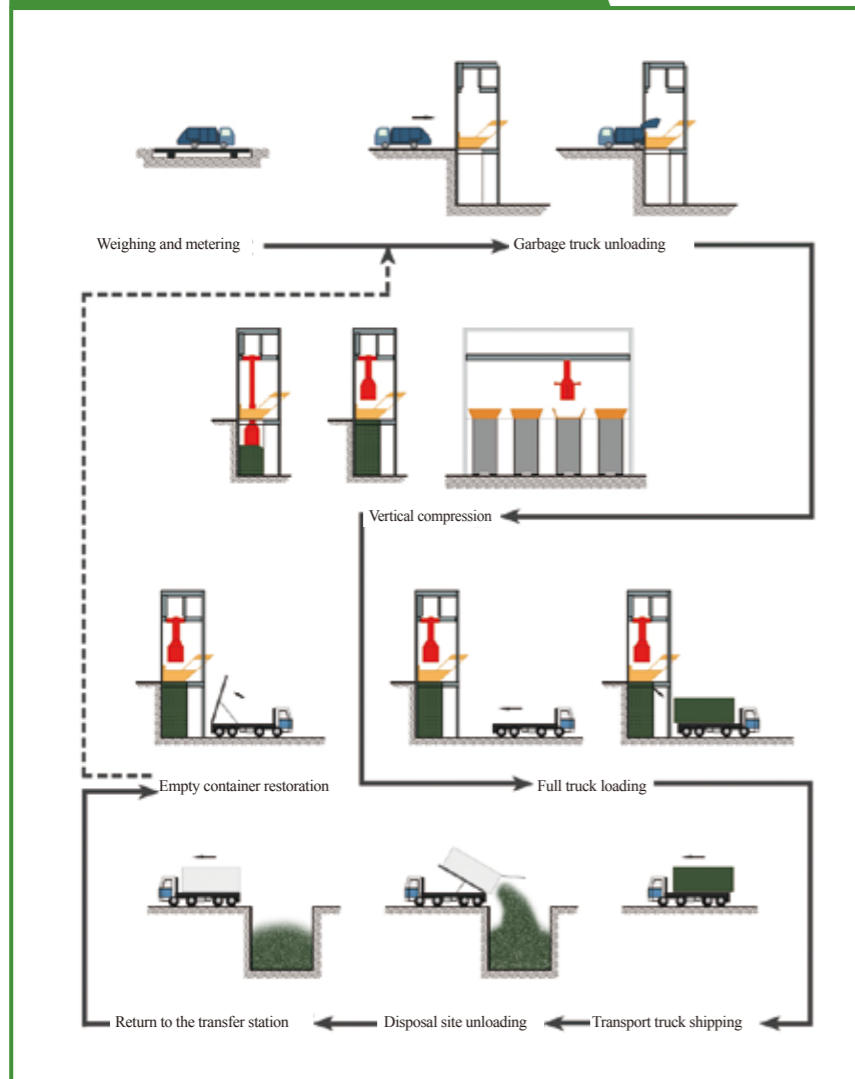


Internal structure of project



Project running time

Vertical Waste Compaction and Transfer System **Overground**



The whole set of equipments is located on foundation built on the ground. The design includes the rampway and the area of operation site, which can be fully closed or semi closed (only the rampway will be located outside).

The nominal capacity of the design is 1000 tons/day and the station will occupy approximately an area of 8000 m². The operation is 78m long, 67m wide and 18.7m high, approximately 4900 m² for the main buildings.

The main workshop of the station contains discharging area, transfer area, rampway, compaction and load area, auxiliary area. The compaction and load area is located in the center of the studio, the second floor of which is the area of discharging and the first floor is the auxiliary area.

Project Site



Garbage dumping moment

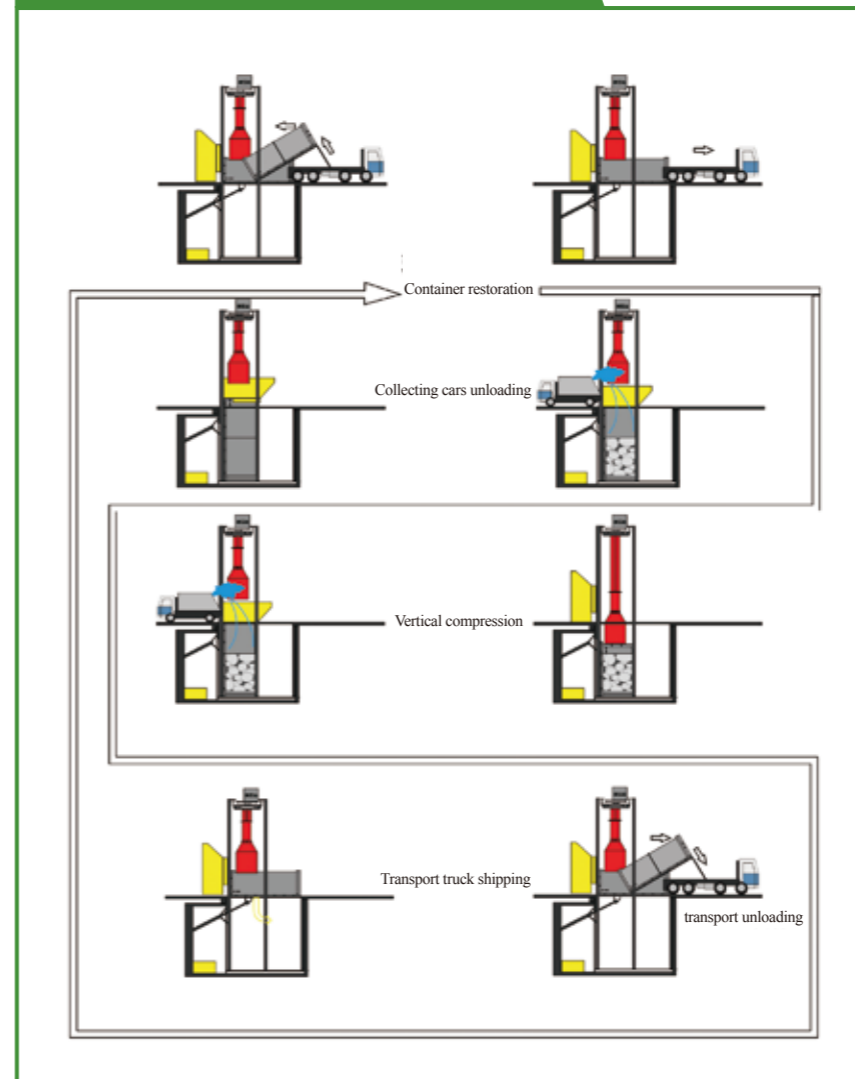


Garbage shipping time



Garbage dumping moment

Vertical Waste Compaction and Transfer System **Underground:**

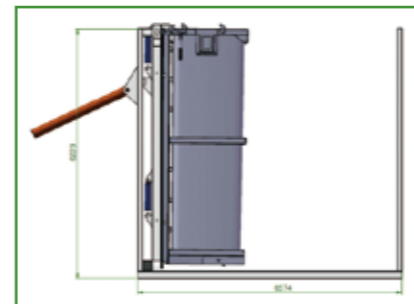


The whole operation area is located underground. Over the station small buildings and green area can be built. Consequently this type of waste compaction system is ideal to be built under park, square and urban green zone as a perfect solution for insufficient space problem in cities.

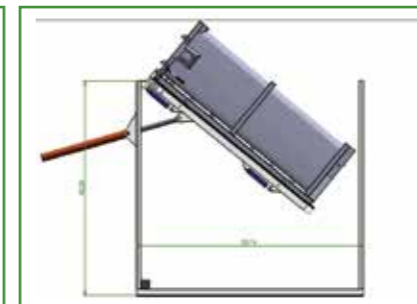
The system has a large capacity of production, which can reach to 1200 tons/day. The main buildings of the system occupy an area of 3940 m² and the operation area is 60m long, 56m wide and 10 high.

The waste collection trucks and transfer trucks enter and leave the station using rampway. The discharging area is located in the first underground floor, the transfer area, office area and other area in the second underground floor.

Project Site



Garbage collecting



Garbage lifting



Garbage pending

Horizontal Waste Compaction and Transfer System

Horizontal Waste Compaction and Transfer System

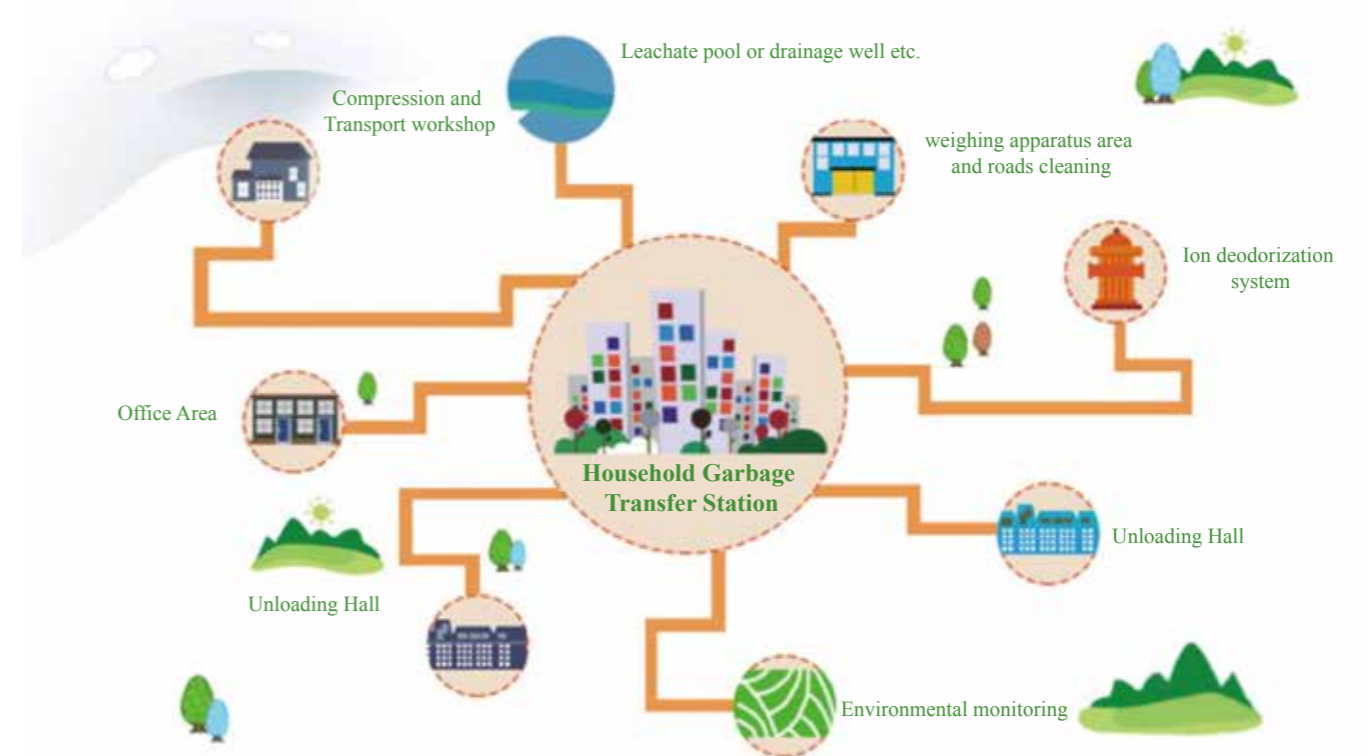
The system is composed of a 2-floor building of steel structure or concrete structure, compaction equipment, waste container, transfer vehicle and auxiliary devices. The main machines of the system are waste compactor, waste container, container displacement devices, feeding devices, waste truck, deodorization and dust-cleaning system, IOT weighing system, monitor system and automatic dispatch system. Based on waste quantity and transfer distance, different numbers of compaction equipment, container and vehicles will be considered.



Full-size view of transfer station



Drawing of Garbage Transfer System



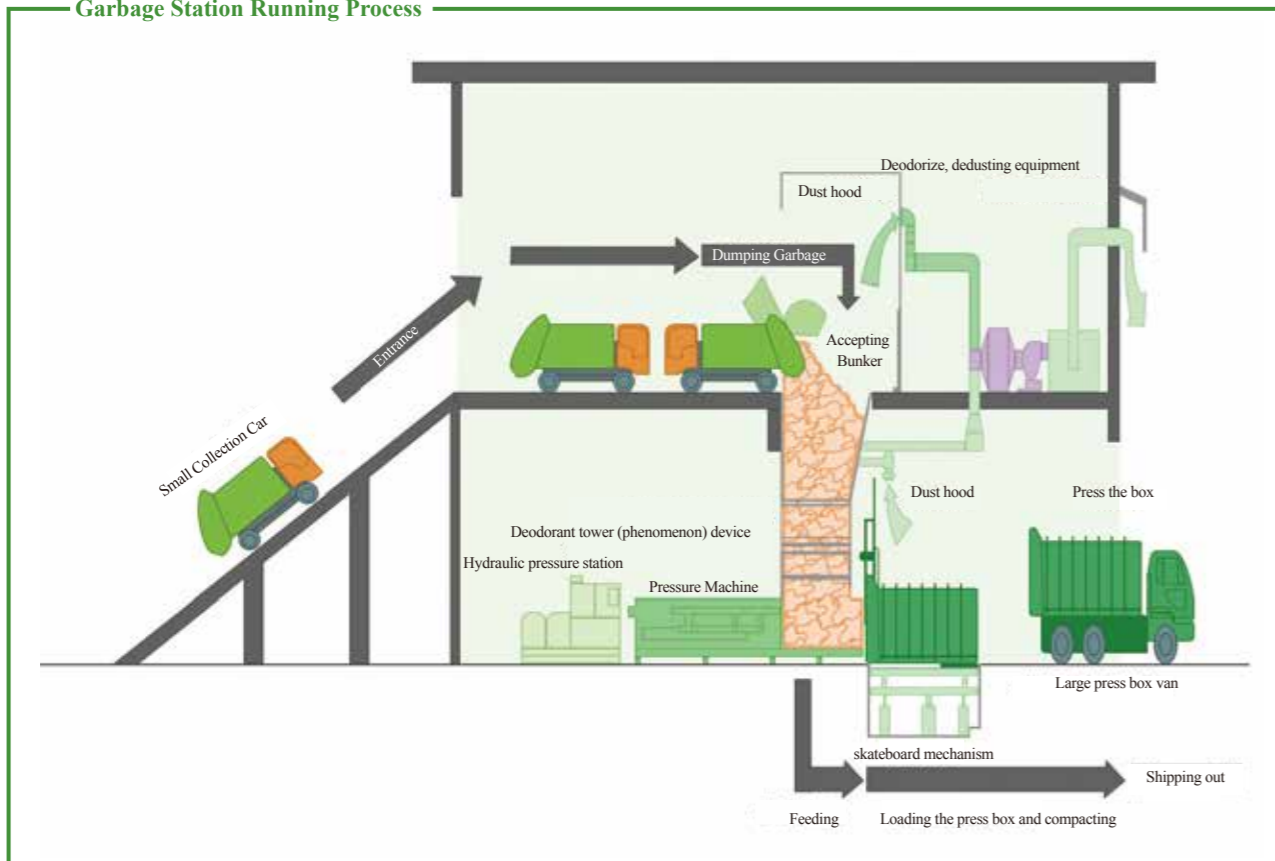
Horizontal Waste Compaction and transfer System Overground



Horizontal Waste Compaction and Transfer System

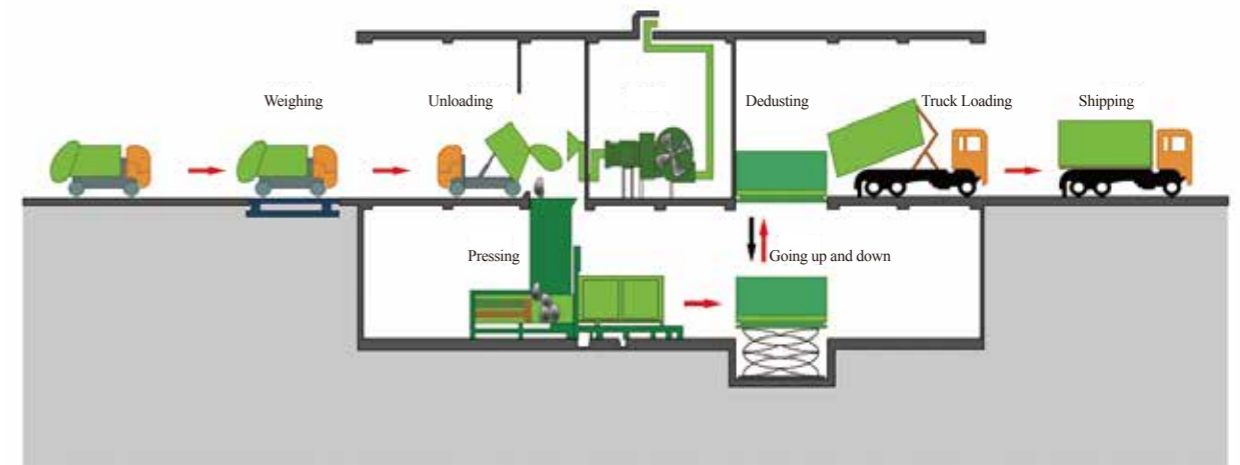
The system is composed of a 2-floor building of steel structure or concrete structure, compaction equipment, waste container, transfer vehicle and auxiliary devices. The main machines of the system are waste compactor, waste container, container displacement devices, feeding devices, waste truck, deodorization and dust-cleaning system, IOT weighing system, monitor system and automatic dispatch system. Based on waste quantity and transfer distance, different numbers of compaction equipment, container and vehicles will be considered.

Garbage Station Running Process



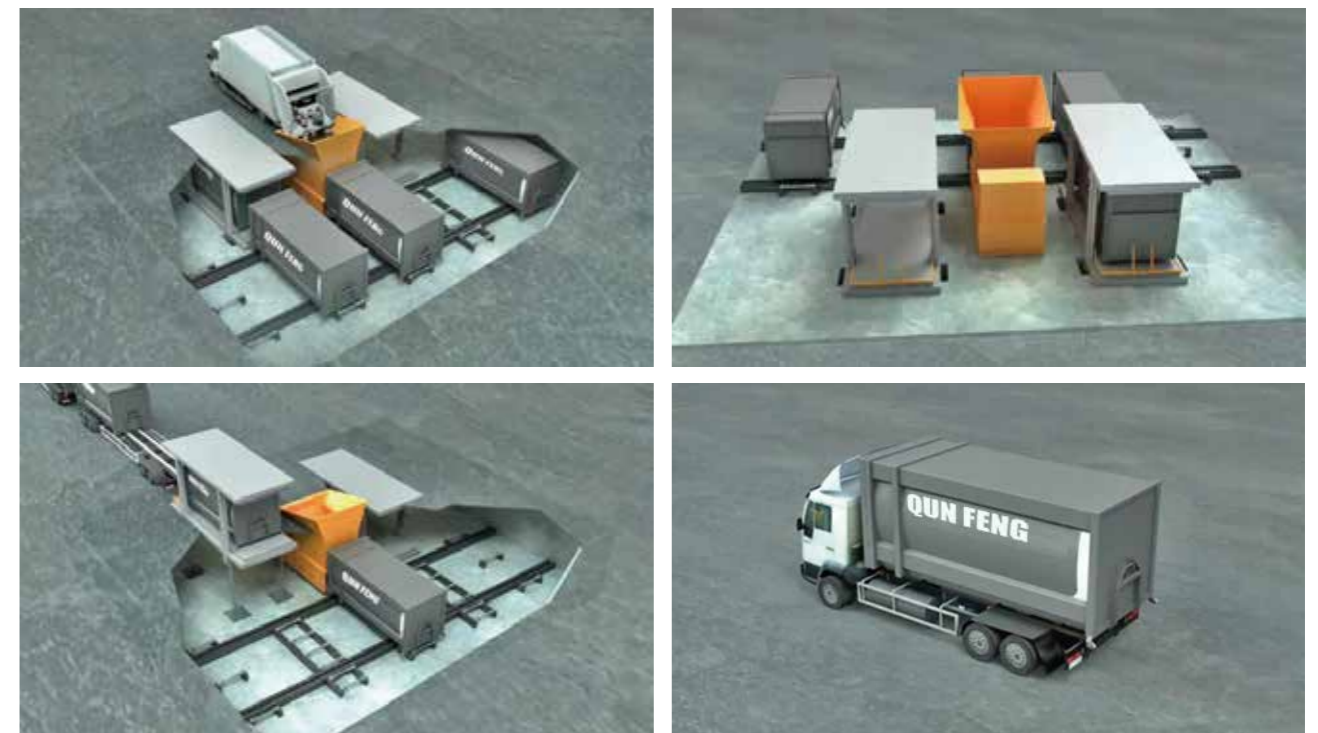
Vertical Waste Compaction and Transfer System Underground

Drawing of underground waste transfer station running process



This system can guarantee a capacity of at least 200 t/d. It's composed of compaction device, container elevator platform, container displacement device, waste container, transfer vehicles, rolling doors, monitor system, deodorization and dust-cleaning system, sprinkler, traffic control system, negative pressure deodorization system, IOT weighing system, central control system and screen display system. The whole system is digitalized.

Project Site



自信源自品质 责任重于泰山

CONFIDENCE STEMS FROM THE QUALITY
RESPONSIBILITY IS THE MOST IMPORTANT



Main Company Manufactory



Our Director Attend People's Congress



Main Company



Xinjiang Manufactory



Saudi Arabia Prince visit our factory



Workshop



Workshop



Workshop



Attend IExp of China

Oslo horizontal compression equipment in Norway



Underground waste equipment in Turkey



Horizontal docking equipment in Russia

Waste paper recycling and baling equipment in Bulgaria



Project drawing of Bulgaria Waste sorting system equipment (300Tons per day)



Zahikhalil Mayor of Lebanon visits our waste sorting project and sign the contract (200 Tons per day)

全球市场

Tire recycling and baling system ordering from Egypt customer



Environmental Industry Project in Shanghai



Ghana waste sorting and treating project successfully negotiation. (2000Tons per day)



Riyadh underground waste compression equipment in Saudi Arabia



Waste paper recycling and baling system equipment



Mecca waste paper baling scene in Saudi Arabia



Underground waste compaction equipment in the financial center of Shanghai