



诚信经营 用心服务
Honest management and sincere service



电话 (Tel) : 0534-5221061

网址 (Web) : www.dezhouqunfeng.com

山东群峰重工科技股份有限公司

Shandong Qunfeng Heavy Industry Technology Co. LTD

智能液压打包系统

INTELLIGENT HYDRAULIC PACKING SYSTEM

了解我们

KNOW US

山东群峰重工科技股份有限公司

Shandong Qunfeng Heavy Industry Technology Co., LTD

群峰重工（山东群峰重工科技股份有限公司）成立于2005年，注册资金1.2亿元，是国内唯一一家将垃圾预处理系统、垃圾中转系统、物联网系统和称重系统等全面结合并独立自主研发、生产集于一体的高新技术企业。公司布局全国及世界各地，在海南、新疆、广西等地都建有生产基地，其生产基地总占地面积500多亩，公司现有员工350多人，其中，中高级职称及以上人员25人，技术骨干55人。2018年，我公司在北京成立华夏青山（北京）生态环境科技有限公司，将固废处理系统方案设计及高新产品的研发作为己任，并以北京为根据地，与世界一流环保产业及国内环境龙头企业达成全方位战略合作，协助国企布局全世界范围的环境产业。

群峰重工先后与北京理工大学、北京工业大学、青岛理工大学达成了战略合作，为设备制造和垃圾综合处理提供技术支持和人才储备。同时，我公司在京成立了北京青山环境研究院，主要专注于垃圾综合处理的研究与探索。2019年起，公司先后与德国园林垃圾处理系统商WILLIBALD、荷兰垃圾系统设备生产商WALAIR、欧洲垃圾处理承包运营商KIVERCO、芬兰WOLMA和台湾BRISORT等国内外知名企业达成合作共识，为国内的垃圾预处理提供前沿的工艺技术保障。2020年，我公司与中国铁建、中国建筑、中交股份、光大国际华北研究院、上海市政总院、中国电建、中钢集团、三峡集团、首创环境、杭州环境、中冶集团等国内知名企业就环境产业的共同发展达成战略合作，为国内外环境业务开展注入了强有力的新兴力量。

作为一家高新技术企业，群峰重工创新性地将人工智能技术应用到垃圾分类行业中，实现了精准、高效的产品回收目标，对推动我国垃圾资源化、减量化、无害化处理的进程具有重要意义。

Qunfeng Heavy Industry (Shandong Qunfeng Heavy Industry Technology Co., LTD.) was founded in 2005, the registered capital of 120 million yuan, is the only domestic waste pretreatment system, waste transfer system, Internet of things system and weighing system comprehensive combination and independent research and development, production set in one of the high-tech enterprises. The company layout nationwide and around the world, in Hainan, Xinjiang, Guangxi and other places have built production bases, its production base covers a total area of more than 500 mu, the company has more than 350 employees, among which, medium and senior titles and above personnel 25 people, 55 technical backbone. In 2018, our company established Huaxia Qingshan (Beijing) Eco-Environmental Technology Co., Ltd. in Beijing, taking the design of solid waste treatment system and the research and development of high-tech products as our own responsibility. Based in Beijing, we have reached an all-round strategic cooperation with the world's first-class environmental protection industry and domestic environmental leading enterprises, assisting state-owned enterprises in the layout of the environmental industry worldwide.

Qunfeng Heavy Industry has reached strategic cooperation with Beijing Institute of Technology, Beijing University of Technology and Qingdao University of Technology to provide technical research and development support and talent reserve for equipment manufacturing and comprehensive waste treatment. At the same time, our company has set up Beijing Qingshan Environmental Research Institute in Beijing, which mainly focuses on the research and exploration of comprehensive waste treatment. Since 2019, the company has reached cooperation consensus with German garden waste treatment system vendor willibald, Dutch waste system equipment manufacturer Walair, European waste treatment contracting operator Kiverco, Finland wolma, Taiwan Brisort and other well-known enterprises at home and abroad. To provide advanced technology support for domestic waste pretreatment. In 2020, our company has reached strategic cooperation with China Railway Construction Corporation, China State Construction Corporation, China Communications Corporation, Everbright International North China Research Institute, Shanghai Municipal General Institute, Power China Construction Corporation, China Steel Corporation, Three Gorges Group, Capital Environment Corporation, Hangzhou Environment Corporation, China Metallurgical Corporation and other well-known domestic enterprises on the common development of environmental industry, which has injected a strong new force for the development of environmental business at home and abroad.

As a high-tech enterprise, Qunfeng Heavy Industry innovatively applies artificial intelligence technology to the garbage sorting industry, realizing the goal of accurate and efficient product recycling, which is of great significance to promote the process of recycling, reducing and harmless treatment of garbage in China.

公司业务范围

Company business scope

垃圾分选

- 有机垃圾综合处理系统
- 建筑垃圾综合处理系统
- 大件垃圾综合处理系统
- 可回收垃圾分拣中心
- 生活垃圾综合处理系统
- 陈腐垃圾综合处理系统

Waste separation

- Organic waste integrated treatment system
- Comprehensive construction waste treatment system
- Comprehensive disposal system of large waste
- Recyclable waste sorting center
- Comprehensive household waste treatment system
- Comprehensive disposal system of landfill waste

智能称重系统

智能称重系统采用高精度、可靠性强的数字传感器，秤台采用自动化连续焊接，减少焊接缺陷、提高秤台结构强度。秤体设计通过100万次的疲劳试验，保证整个设备使用稳定性。

Intelligent weighing system

Intelligent weighing system adopts digital sensors with high precision and strong reliability, and the scale platform adopts automatic continuous welding to reduce welding defects and improve the structural strength of the scale platform. The scale body design through one million times of fatigue test, to ensure the stability of the whole equipment.

垃圾中转站

- 大型垃圾中转站
- 中小型垃圾中转站

Waste transfer station

- Large waste transfer station
- Small and medium-sized waste transfer stations

打包机

打包机用于在常态下将废纸及其他类似的物料挤压结实至打包成型，并用退火铁丝捆扎固定，使其体积大幅度缩小，使其体积大幅度减小，达到减少运输次数、节省运输成本、增加效益的目的。

Baling press

The baling machine is used to extrude waste paper and other similar materials into packing and forming under normal conditions, and bind and fix them with annealed iron wire, so that their volume is greatly reduced, so that the volume is greatly reduced, to reduce the transportation times, save transportation costs, and increase benefits.

项目业绩

Project performance

70+

国内外垃圾分选项目
Garbage sorting project
at home and abroad

20+

大型垃圾中转站项目
Large waste transfer
station project

100+

中小型垃圾中转站项目
Small and medium-sized
refuse transfer station project

30+

打包机畅销30多个国家
Baling machine sells well
in more than 30 countries

80+

打包机年销售80多台
Baling machine annual
sales of more than 80 sets

产品介绍

PRODUCT INTRODUCTION



群峰重工-来自中国的打包机第一品牌

QUNFENG HEAVY INDUSTRY - THE FIRST BRAND OF BALING MACHINE FROM CHINA

群峰重工从事棉花打包机、废纸打包机、秸秆打包机、压块机、等各种液压打包设备的研究开发、生产及销售。公司产品的设计、开发及研制、生产管理等均网络化，拥有先进的CAD、CAM技术，同时拥有大型折弯机、龙门铣床、全自动焊接机及喷沙设备。

公司严格按照ISO9001质量认证标准，精心打造优质的品牌，其中秸秆打包机、全自动废纸打包机、全自动液压棉花打包机销售范围覆盖二十多个省、市、自治区、直辖市，部分产品还远销新加坡、马来西亚、印度尼西亚等国家等。优质的产品和服务、公道的价格赢得了广大消费者的厚爱。

Qunfeng Heavy Industry is engaged in the research and development, production and sales of various hydraulic packaging equipment such as cotton baler, waste paper baler, straw baler, block press, etc. Company product design, development and development, production management are networked, with advanced CAD, CAM technology, at the same time with large bending machine, gantry milling machine, automatic welding machine and sand blasting equipment.

In strict accordance with ISO9001 quality certification standards, the company carefully creates high-quality brands, including straw baling machine, automatic waste paper baling machine, automatic hydraulic cotton baling machine sales scope covers more than 20 provinces, cities, autonomous regions, municipalities directly under the central government, some products are exported to Singapore, Malaysia, Indonesia and other countries. High quality products and services, fair prices to win the vast number of consumers love.

高效节能打包机 品质保证 6大核心卖点

HIGH EFFICIENCY AND ENERGY SAVING BALING PRESS
QUALITY ASSURANCE SIX CORE SELLING POINTS



材料好
Good material
选用优质型材结构
Select high quality profile structure



易操作
Easy to operate
智能化一键启动
Intelligent one key start



性能稳定
Stable performance
低噪音 伺服系统节能省电20%
Low noise servo system saves energy and power by 20%



用途广
Widely used
废纸、秸秆、旧衣服
Waste paper, straw, old clothes



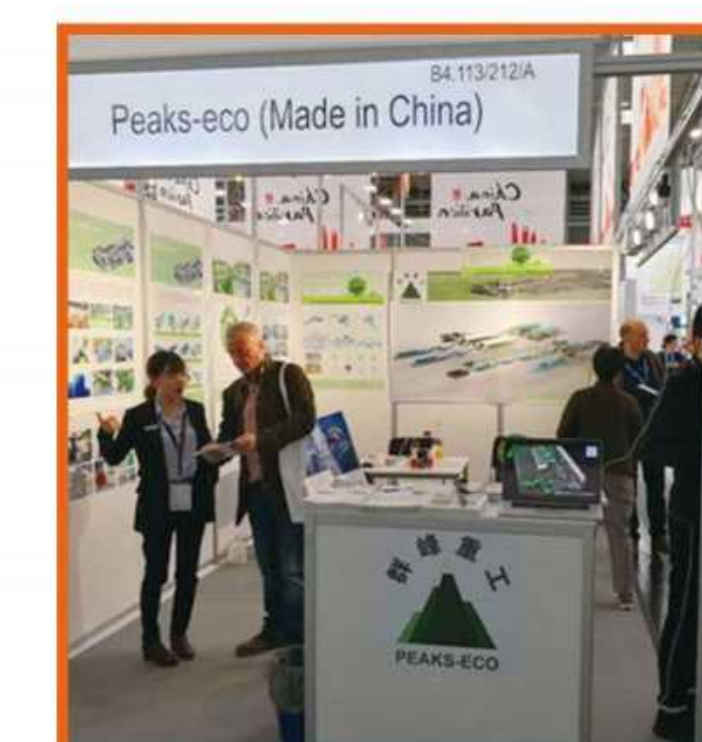
配置高
High configuration
伺服节能系统控制液压打包程序
Servo energy saving system controls the hydraulic packing process



品质高
High quality
降低设备运行能耗 延长部件使用周期
Reduce power consumption and prolong the service life of components

我们的产品获得国内外客户的好评与认可

OUR PRODUCTS ARE WELL RECEIVED AND RECOGNIZED BY CUSTOMERS AT HOME AND ABROAD



▲展会上为客户耐心解答问题
Patiently answer questions for customers at the exhibition



▲参观公司生产车间
Visit the company's production workshop



▲与国外客户达成合作
Reach cooperation with foreign customers

1250型打包机

MODEL 1250 BALER

打包机用于在常态下将废纸及其他类似的物料挤压结实至打包成型，并用退火铁丝捆扎固定，使其体积大幅度缩小，达到减少运输次数、节省运输成本、增加经济效益的目的。

The baling machine is used to extrudate waste paper and other similar materials into packing and forming under normal conditions, and bind and fix them with annealed iron wire, so that their volume can be greatly reduced, and the purpose of reducing transportation times, saving transportation cost and increasing economic benefits can be achieved.



主油缸采用耳轴式，球端接头设计，避免油缸杆产生扭矩，延长密封寿命，减少维护。
Trunnion-mounted main cylinder and ball-end joint designing avoid torque on rod of cylinder that will long seals' life and less maintenance.



独特的自动捆包装置，提高捆包速度。结构简单，故障率低，易于清洗。
Exclusive auto-tier system increases speed of bale tying. The simple structure is optimum for less maintenance and easy cleaning.



设备已通过CE认证，获得UL安全措施标识。
The machine has been passed CE. UL safety measure identification.



可变量滑道装置，大料口适合体积较大的纸板，小料口适合不易切断的纸类及其他物料。
Variable feed slide device, aniseed port suitable for large volume of cardboard, small feed port suitable for not easy to cut off the paper and other materials.



分散刀步，减少剪切力，提高效率和使用寿命。
Scattering cutter separate steps duty to reduce shear force to increase efficiency and life span.



止逆板可防止弹性较大的物料回弹，大幅度增加效能及密度，同时可压出方正形状的成品。
Anti-back pawl can stop back for hard memory material. That is rising efficacy and density, also getting square shape of baler.

卷纸机是一种专门用于堆放报纸、文件、杂志、书籍，可增加打包机压实密度。

Flffer is distributing device special for stack newspaper, document, magazine and books to increase compacting density of baler.



四个方向浮动缩口可自动分配四面压力，广泛用于各种不同物料的压缩。
4-way free-floating chamber distributes presses automatically, which is perfect performance for frequent to change material.



带监控的回收操作面板，可根据不同回收物料的特性设定不同参数操作模式，更换材料时只需切换操作模式，即可变换一组最佳化的设定值。
Professional recycle operation panel with monitor, easy to set operation parameter for different materials. Change operation mode just turn mode choosing switch to get a group optimum parameters.

技术参数

Technical parameter

| 产品名称 Product name | 1250型全自动打包机 Model 1250 fully automatic baling machine |
|-------------------------|---|
| 型号 Modes | 1250型全自动 Model 1250 fully automatic |
| 主油缸 Main cylinder | Φ250(缸径)/2700mm(行程) Φ250(cylinder diameter)/2700mm(stroke) |
| 包块尺寸 Bale size | 长度可调x1100(宽)x1250(高)mm 1100(w)*1250(h)mm*length adjustable |
| 电机功率 Motor power | 37KW |
| 打包密度 Bale density | 约450KG/m³ About 450kg/m³ |
| 捆扎道数 Strapping lines | 5道 5lines |
| 操作方式 Operation ways | PLC控制，自动捆扎方式 PLC control, Strapping automatically |
| 产量 Capacity | 8-12包左右/小时 About 8-12 bale/h |

| 产品名称 Product name | 1250型半自动打包机 Model 1250 semi-automatic baling machine |
|-------------------------|---|
| 型号 Modes | 1250型半自动 Model 1250 semi-automatic |
| 主油缸 Main cylinder | Φ250(缸径)/2700mm(行程) Φ250(cylinder diameter)/2700mm(stroke) |
| 包块尺寸 Bale size | 长度可调x1100(宽)x1250(高)mm 1100(w)*1250(h)mm*length adjustable |
| 电机功率 Motor power | 37KW |
| 打包密度 Bale density | 约450KG/m³ About 450kg/m³ |
| 捆扎道数 Strapping lines | 5道 5lines |
| 操作方式 Operation ways | 按钮操作，手动捆扎方式 Push button operation, manual binding mode |
| 产量 Capacity | 7-10包左右/小时 About 7-10 bale/h |

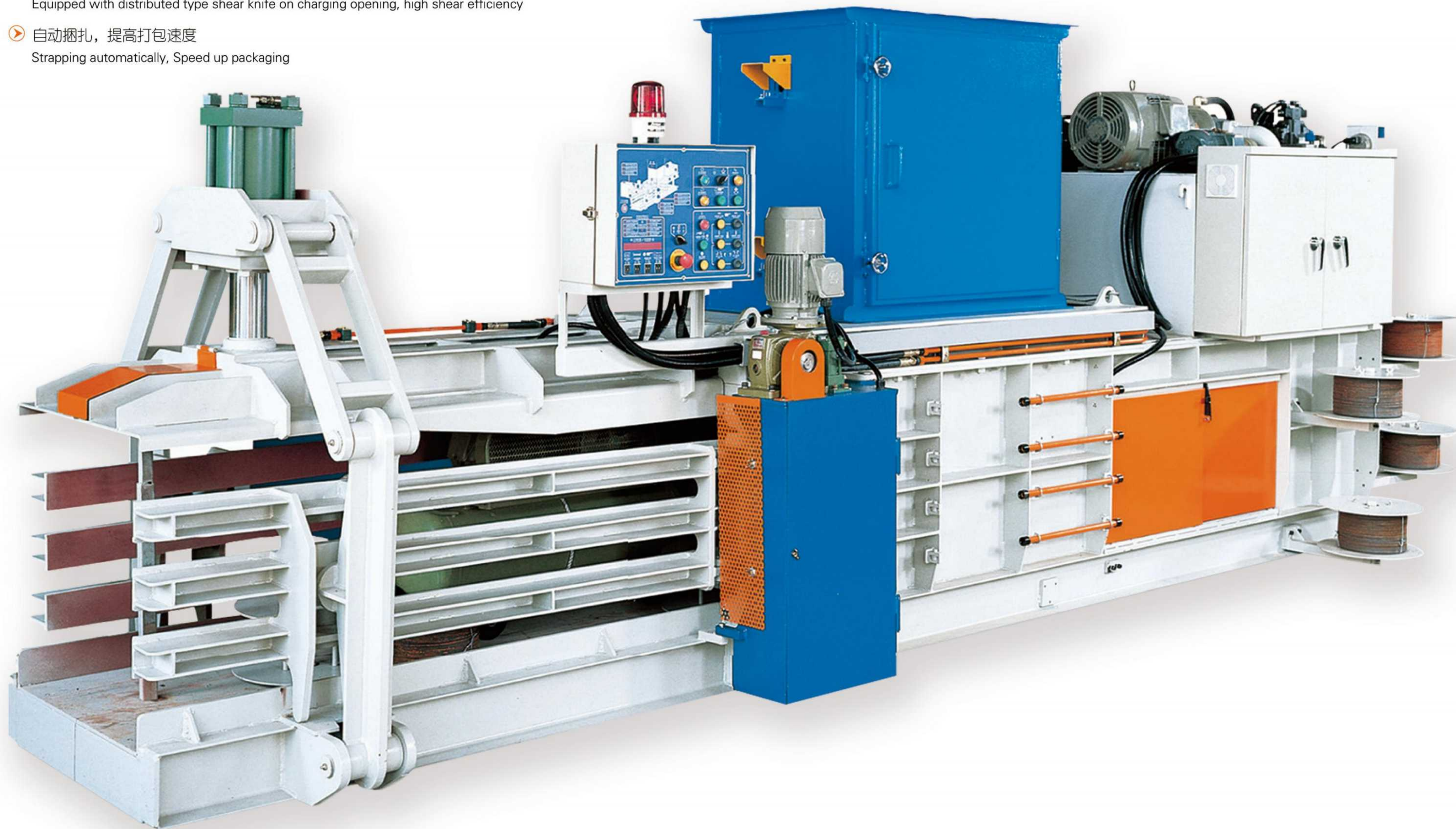
850型打包机

TYPE 850 BALING PRESS

性能特点

Performance characteristics

- ▶ PLC控制，人机界面（触摸屏）和视窗式监控，同步动作指示配合错误警告，可设定包块长度
PLC control, human computer interface and window monitoring, sync action indication with error warning, can set the length of the bale
- ▶ 浮动式缩口设计，有利于自动分配四面压力
Floating gate design, is conducive to the automatic distribution of all the pressure
- ▶ 加料口带分散式剪切刀，剪切效能高
Equipped with distributed type shear knife on charging opening, high shear efficiency
- ▶ 自动捆扎，提高打包速度
Strapping automatically, Speed up packaging



技术参数

Technical parameter

| 产品名称 Product name | 850型全自动打包机 Model 850 fully automatic baling machine |
|-------------------------|---|
| 型号 Modes | 850型全自动 Model 850 fully automatic |
| 主油缸 Main cylinder | Φ220(缸径)/2600mm(行程) Φ220(cylinder diameter)/2600mm(stroke) |
| 包块尺寸 Bale size | 长度可调x1100(宽)x850(高)mm 1100(w)*850(h)mm*length adjustable |
| 电机功率 Motor power | 30KW |
| 打包密度 Bale density | 约450KG/m³ About 450kg/m³ |
| 捆扎道数 Strapping lines | 3道 3lines |
| 操作方式 Operation ways | PLC控制，自动捆扎方式 PLC control, Strapping automatically |
| 产量 Capacity | 7-10包左右/小时 About 8-12 bale/h |

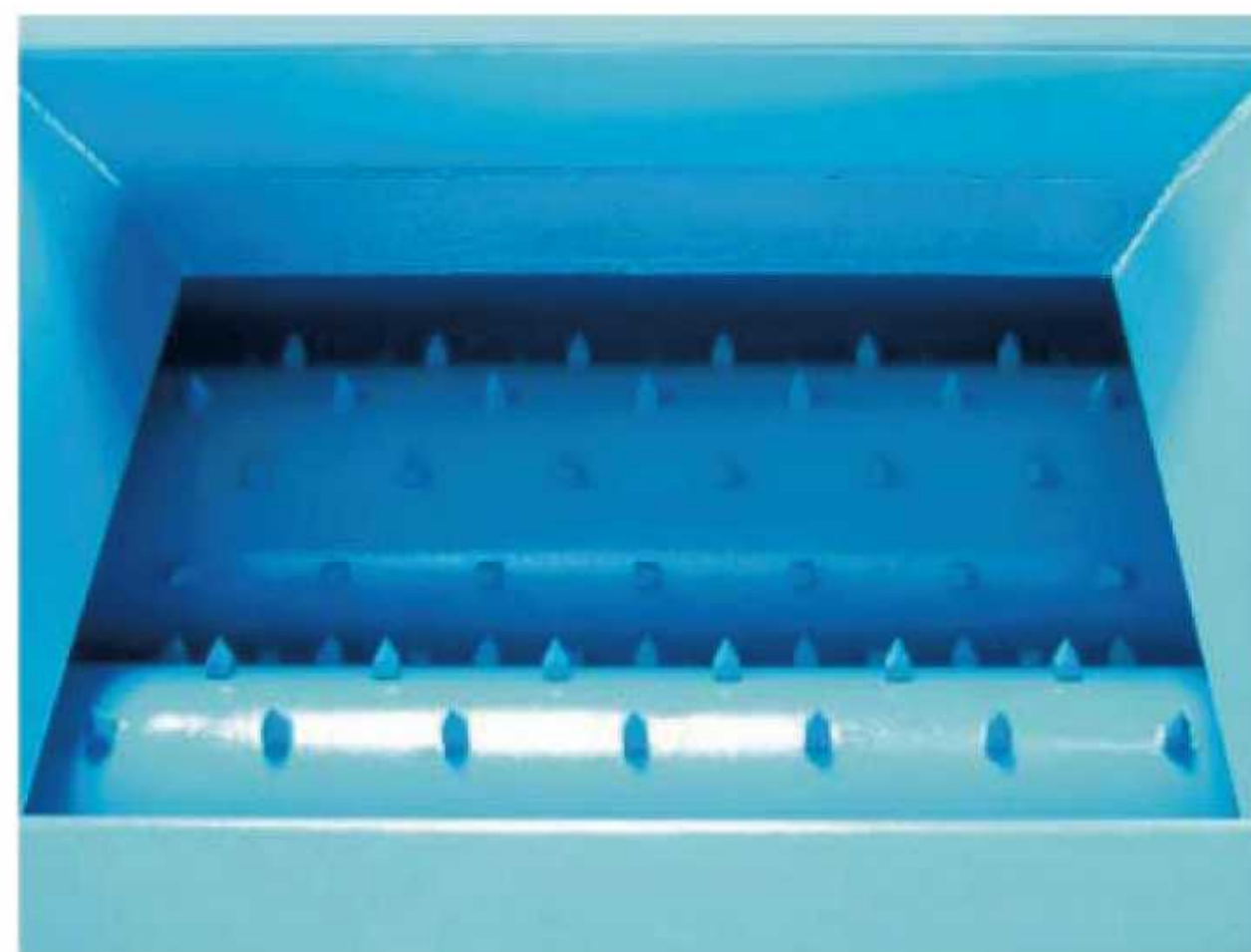
| 产品名称 Product name | 850型半自动打包机 Model 850 semi-automatic baling machine |
|-------------------------|---|
| 型号 Modes | 850型半自动 Model 850 semi-automatic |
| 主油缸 Main cylinder | Φ220(缸径)/2600mm(行程) Φ220(cylinder diameter)/2600mm(stroke) |
| 包块尺寸 Bale size | 长度可调x1100(宽)x850(高)mm 1100(w)*850(h)mm*length adjustable |
| 电机功率 Motor power | 30KW |
| 打包密度 Bale density | 约450KG/m³ About 450kg/m³ |
| 捆扎道数 Strapping lines | 3道 3lines |
| 操作方式 Operation ways | 按钮操作，手动捆扎方式 Push button operation, manual binding mode |
| 产量 Capacity | 6-9包左右/小时 About 6-9 bale/h |

1250型开关门打包机

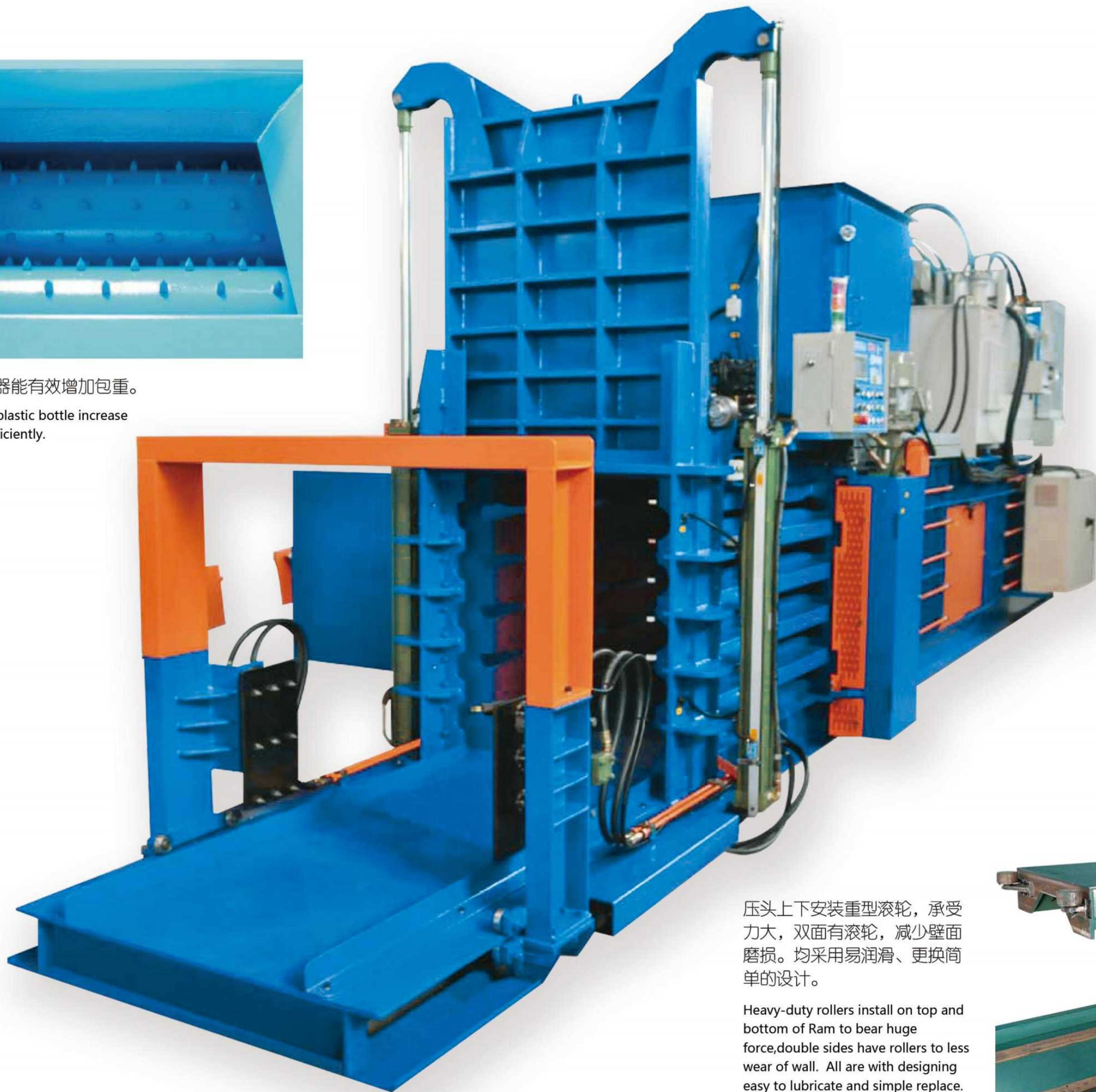
MODEL 1250 OPEN AND CLOSE BALER

1250型开关门打包机适用于棉花、废纸、废旧塑料等松散物质的压缩打捆。

1250 opening and closing baling machine is suitable for packing loose materials such as cotton, waste paper and waste plastics.



塑料瓶穿孔器能有效增加包重。
Perforator for plastic bottle increase bale weight efficiently.



压头上下安装重型滚轮，承受力大，双面有滚轮，减少壁面磨损。均采用易润滑、更换简单的设计。
Heavy-duty rollers install on top and bottom of Ram to bear huge force, double sides have rollers to less wear of wall. All are with designing easy to lubricate and simple replace.



独特的自动捆包装置，提高捆包速度。结构简单，故障率低，易于清洗。
Exclusive auto-tier system increases speed of bale tying. The simple structure is optimum for less maintenance and easy cleaning.



性能特点

Performance characteristics

- ▶ 卧式结构、采用输送带加料、省时省力又方便
Horizontal structure, using conveyor belt feeding, saving time and labor and convenient
- ▶ 按钮操作、PLC控制、安全可靠
Button operation, PLC control, safe and reliable
- ▶ 配用功率根据机器型号、实际生产要求进行调整
The allocated power shall be adjusted according to the machine model and actual production requirements
- ▶ 可根据用户要求选配链板式或皮带式输送机，输送量大、抗耐磨、载重能力强，并具有防滑落功能
Chain plate or belt conveyor can be selected according to user requirements, with large throughput, wear-resistant, strong load capacity, and anti-slip function
- ▶ 打包长度可自由设定，微电脑准确记录打包数值及生产效率
Packing length can be set freely, microcomputer accurately record packing value and production efficiency

技术参数

Technical parameter

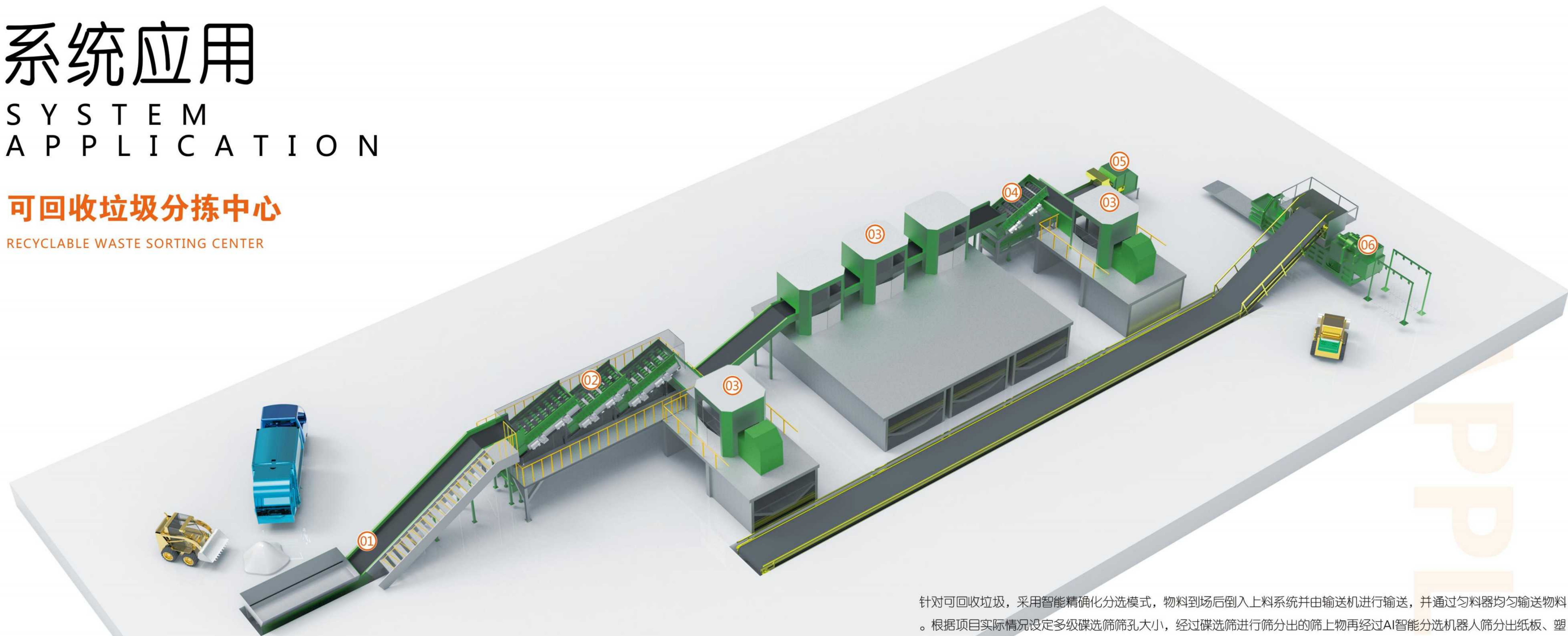
| 产品名称 Product name | 1250型开关门打包机 Model 1250 open and close baler |
|-------------------------|---|
| 型号 Modes | 1250型开关门打包机 Model 1250 open and close baler |
| 主油缸 Main cylinder | Φ280(缸径)/4200mm(行程) Φ280(cylinder diameter)/4200mm(stroke) |
| 包块尺寸 Bale size | 长度可调x1100(宽)x1250(高)mm 1100(w)*1250(h)mm*length adjustable |
| 电机功率 Motor power | 55KW |
| 打包密度 Bale density | 约500KG/m³ About 500kg/m³ |
| 捆扎道数 Strapping lines | 7道 7lines |
| 操作方式 Operation ways | 按钮操作，手动捆扎方式 Push button operation, manual binding mode |
| 产量 Capacity | 5-10包左右/小时 About 5-10 bale/h |

系统应用

SYSTEM
APPLICATION

可回收垃圾分拣中心

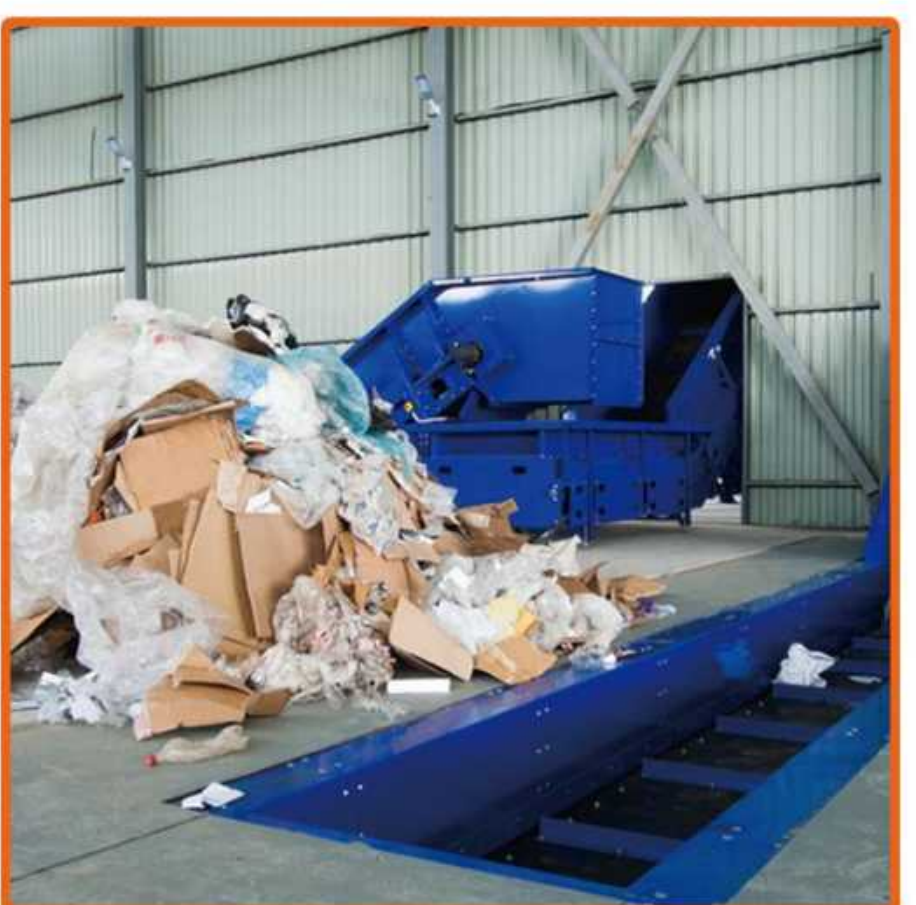
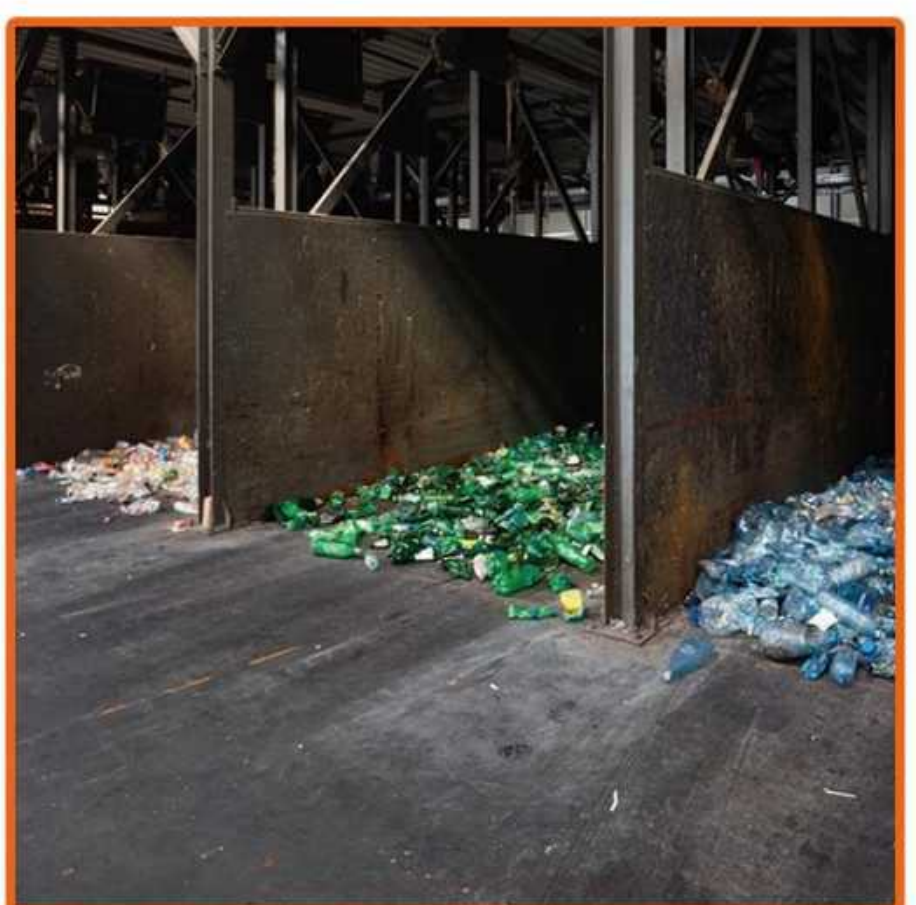
RECYCLABLE WASTE SORTING CENTER



- ① 上料系统 Feeding system ② 多级碟选 Multilevel disk selection
③ AI智能分拣机器人 AI intelligent sorting robot ④ 碟选系统 Disk selection system
⑤ NIR光选系统 NIR optical selection system ⑥ 打包系统 Packaging system

针对可回收垃圾，采用智能精确化分选模式，物料到场后倒入上料系统并由输送机进行输送，并通过匀料器均匀输送物料。根据项目实际情况设定多级碟选筛孔大小，经过碟选筛进行筛分出的筛上物再经过AI智能分选机器人筛分出纸板、塑料薄、包装纸等，再经NIR光选系统将筛分后的物料分为不同颜色，再经打包系统进行压缩打包。筛下物同样经过AI智能分选机器人分选，筛分后的物料直接进行压缩打包。

For recyclable garbage, intelligent precision sorting mode is adopted. The materials are poured into the feeding system and transported by the conveyor after arriving at the site, and the materials are uniformly transported through the homogenizer. According to the actual situation of the project set the size of the multi-stage dish screening screen, after the dish screening screen out of the screen and then AI intelligent sorting robot screen out of cardboard, plastic thin, wrapping paper, and then NIR light selection system will be screened after the material is divided into different colors, and then packaging system for compression packaging. The materials under the screen are also sorted by AI intelligent sorting robot, and the materials after screening are compressed and packed directly.



相关设备

RELATED EQUIPMENT

AI智能分拣机器人

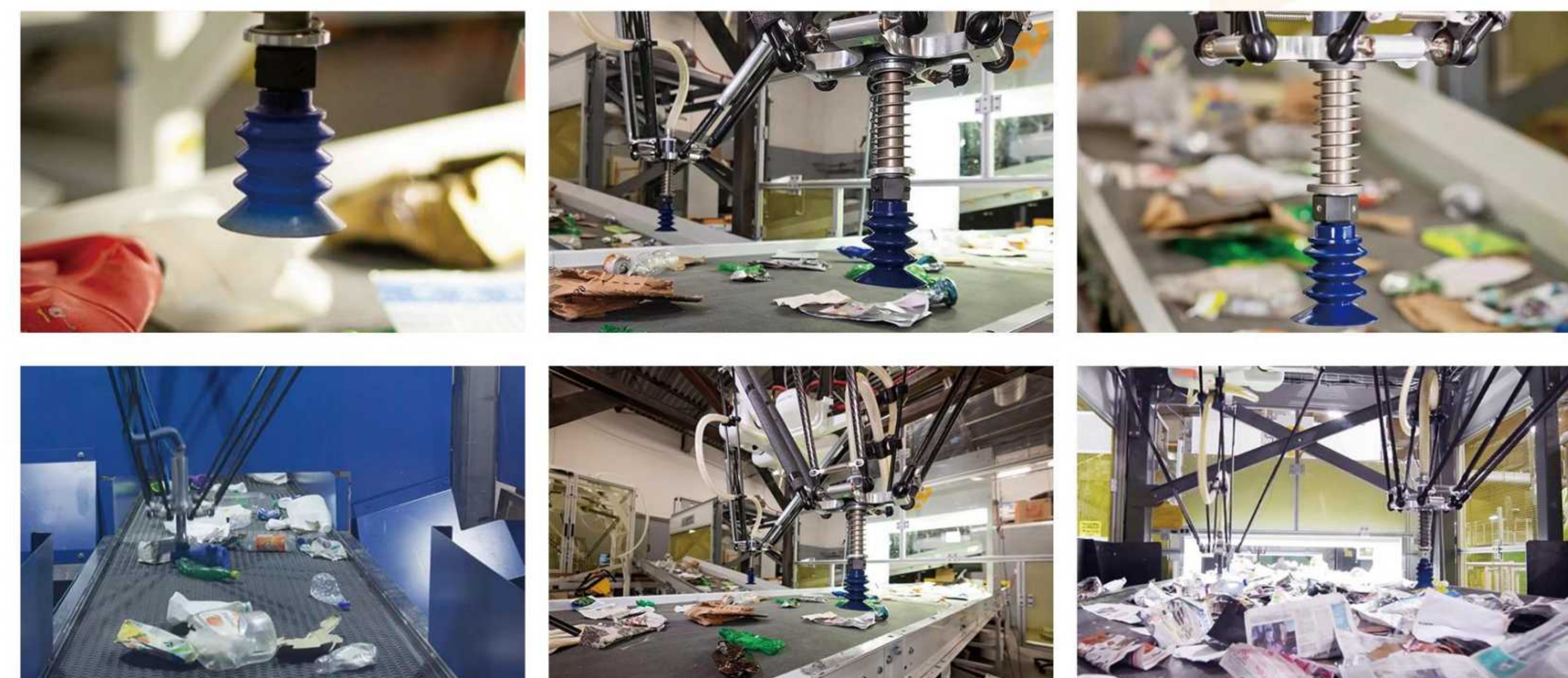
AI INTELLIGENT SORTING ROBOT

AI智能分拣机器人采用了卓越的人工智能技术来识别不同材质的垃圾，以实现准确、积极的产品回收或精确的质量控制功能。

The AI intelligent sorting robot uses superior AI technology to identify waste of different materials to achieve accurate, active product recycling or precise quality control functions.



- ✓ 减少人力成本和管理成本
Reduce labor cost and administrative cost
- ✓ 每分钟挥臂多达70次，是人工拣选速度的2倍
Up to 70 swings per minute, twice as fast as manual picking
- ✓ 目标产品识别率高达95%
The target product recognition rate is as high as 95%
- ✓ 提高分拣效率和效果，保证可用性、安全性
Improve sorting efficiency and effect to ensure availability and safety

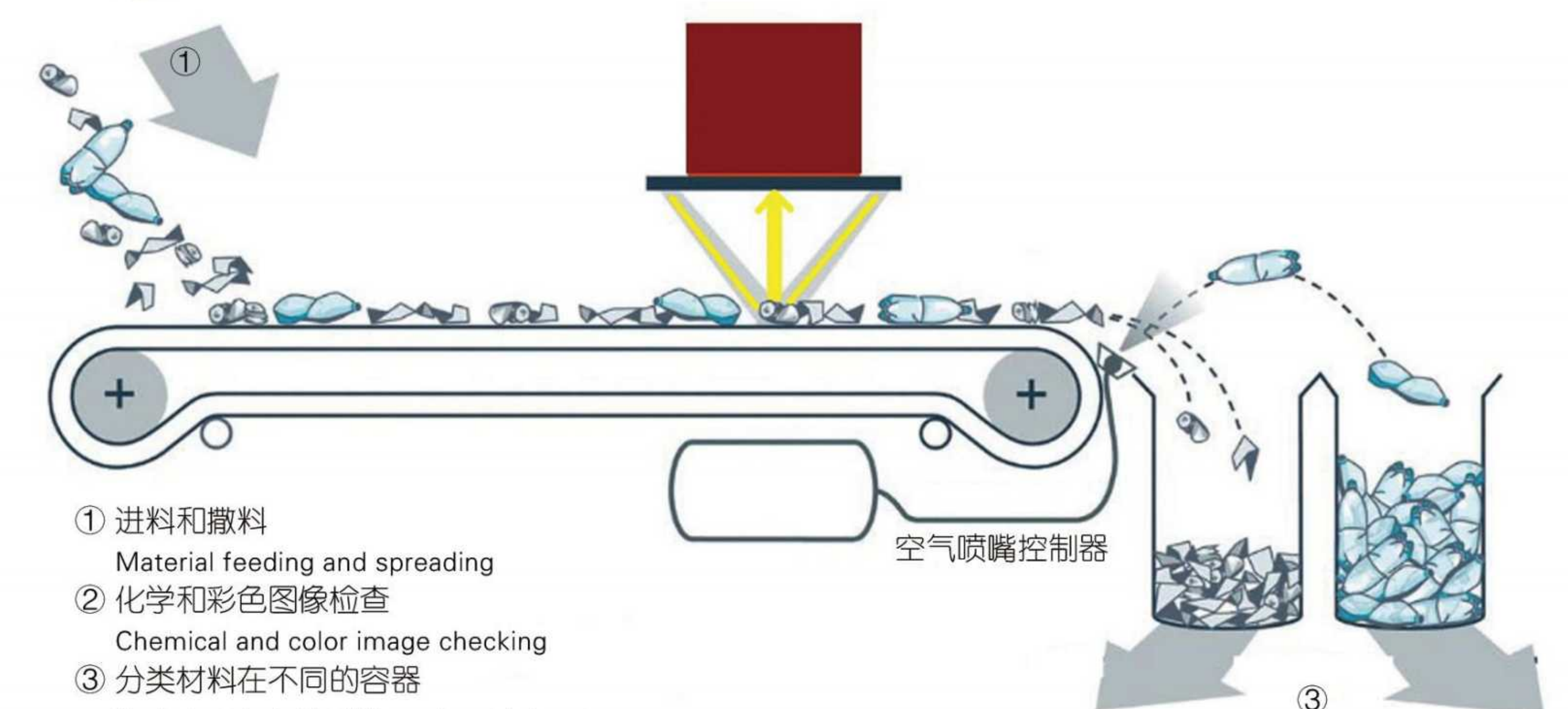
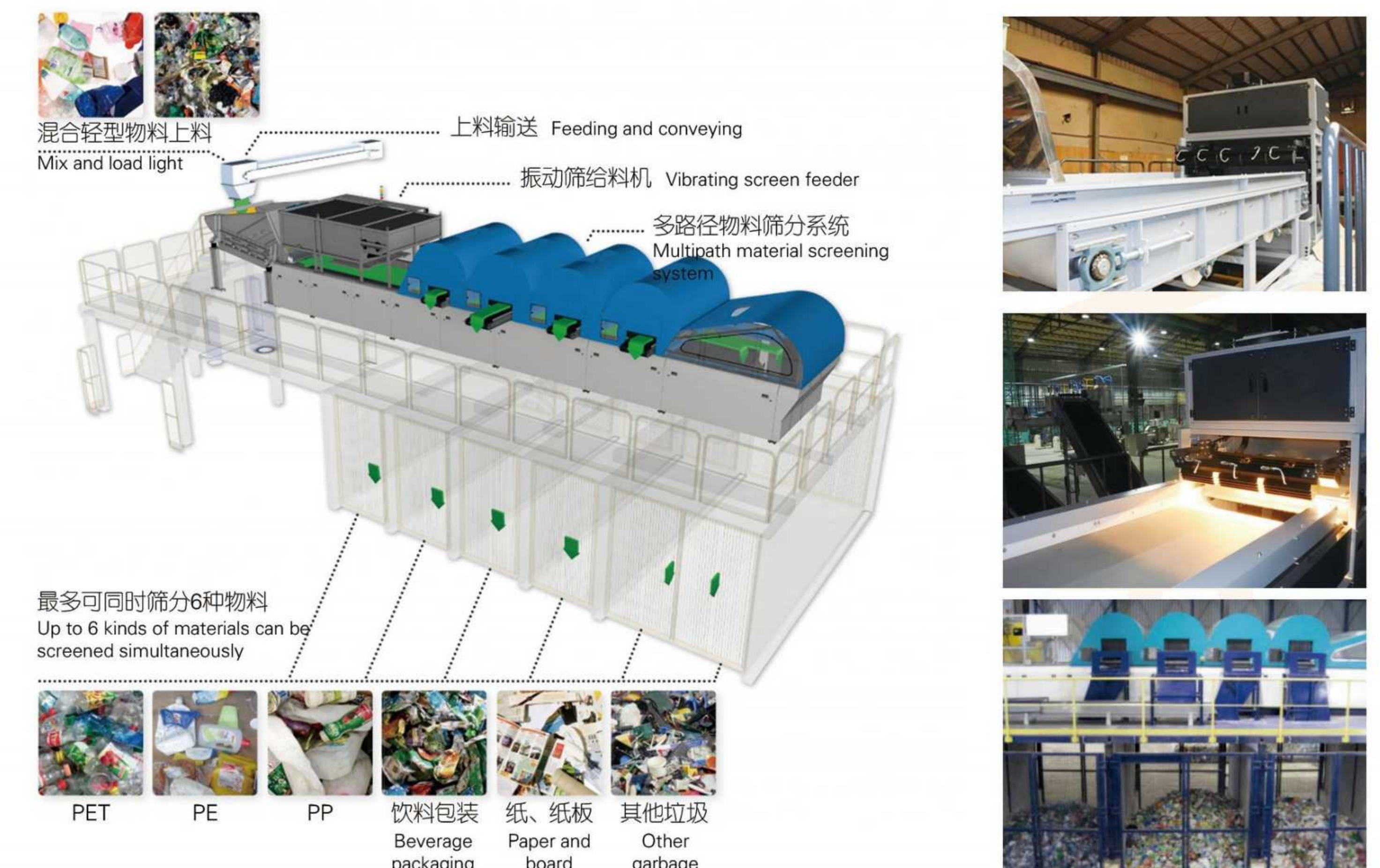


NIR光选系统

NIR OPTICAL SELECTION SYSTEM

光学分选设备利用先进的光学技术、近红外（NIR）、中红外（MIR）和可见光，通过材质和颜色，对木材、各种塑料、纸张、纸板、有色金属进行分选。

Optical sorting equipment uses advanced optical technology, near infrared (NIR), middle infrared (MIR) and visible light, by material and color, wood, various plastics, paper, cardboard, non-ferrous metals for sorting.



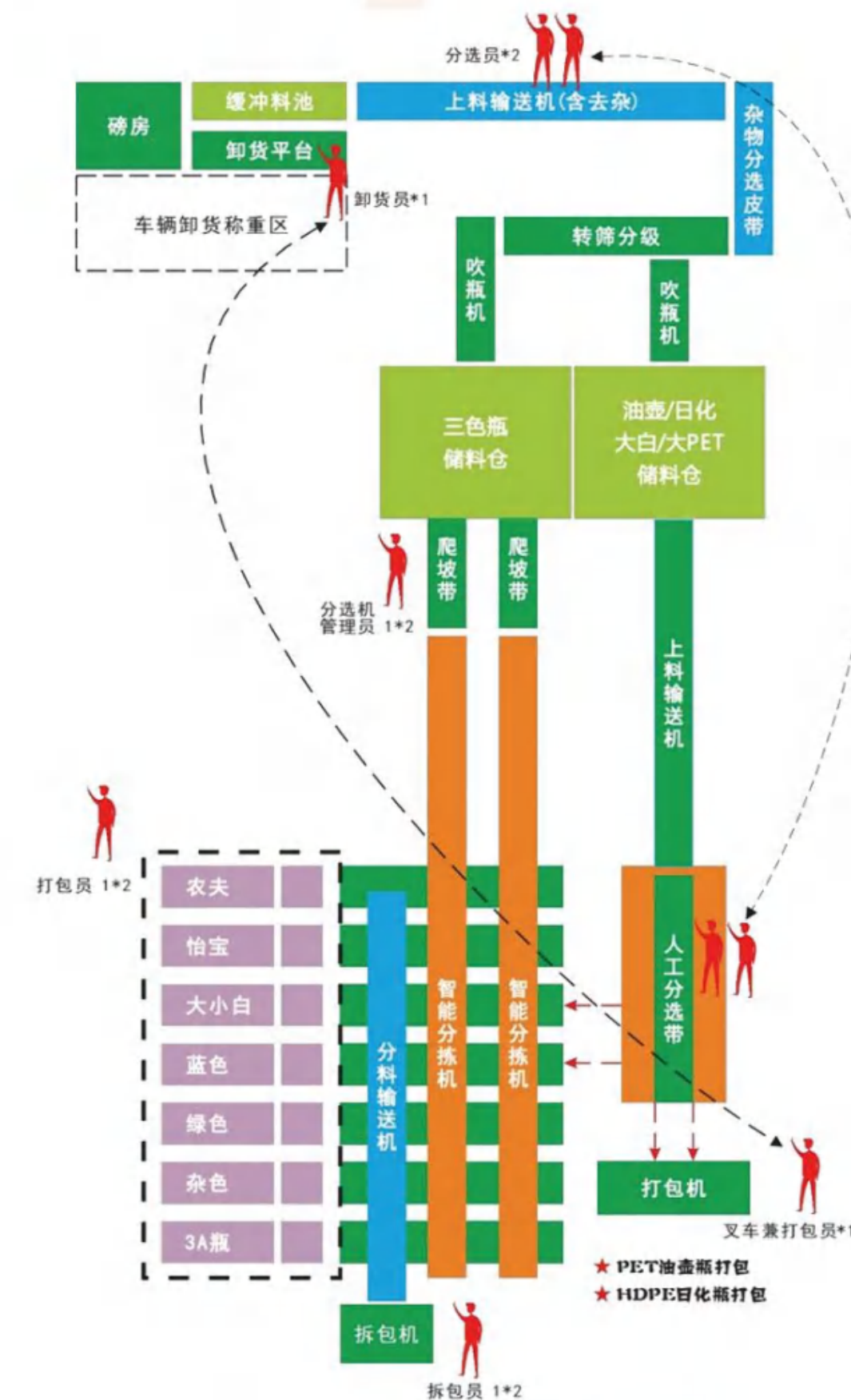
工作流程
Work flow

容仓

STORAGE



- ✓ **施工周期短** – 满足厂家紧急建仓的需求;
Short construction period – to meet the needs of manufacturers for emergency warehouse construction;
- ✓ **减少环境污染** – 干式施工, 可全程无水作业, 粉尘量少, 减少环境污染及对附近居民的影响;
Reduce environmental pollution – dry construction, water free operation, less dust, reduce environmental pollution and the impact on nearby residents;
- ✓ **节约成本** – 钢结构仓库成本比混凝土建筑低2-3倍, 减少建造成本及工人费用;
Cost saving – the cost of steel structure warehouse is 2-3 times lower than that of concrete building, reducing construction costs and labor costs;
- ✓ **自重轻** – 钢结构墙体和屋面均使用轻质金属建材, 可降低仓库整体重量, 不会损伤结构稳定。
Light weight – steel structure wall and roof are made of light metal building materials, which can reduce the overall weight of the warehouse without damaging the stability of the structure.



项目现场

PROJECT SITE

